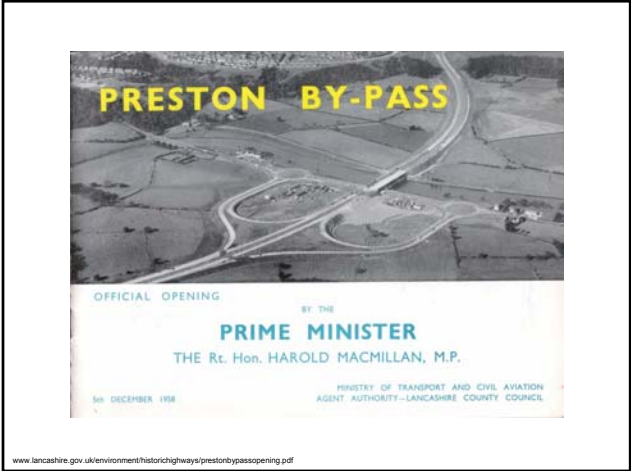
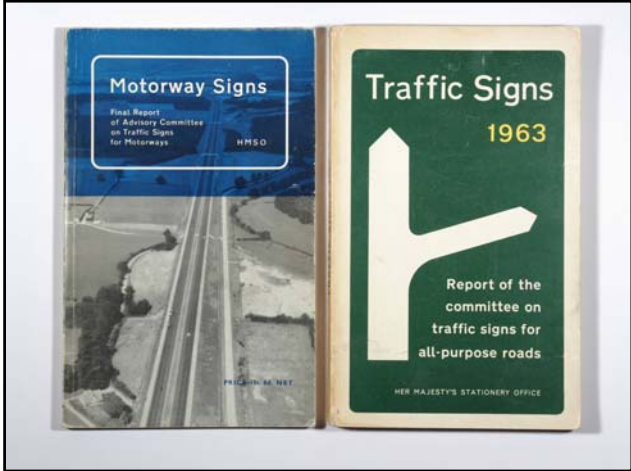
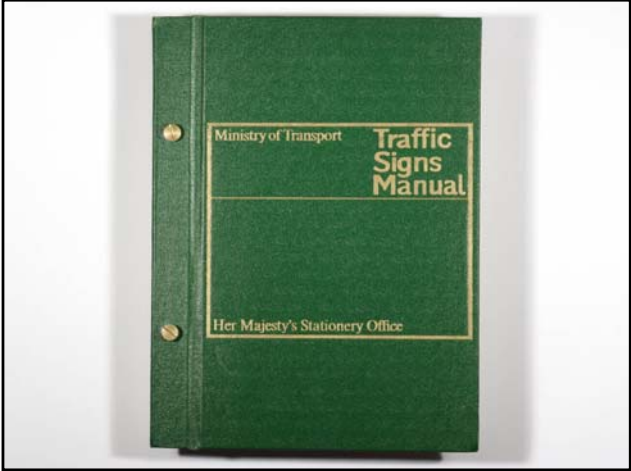


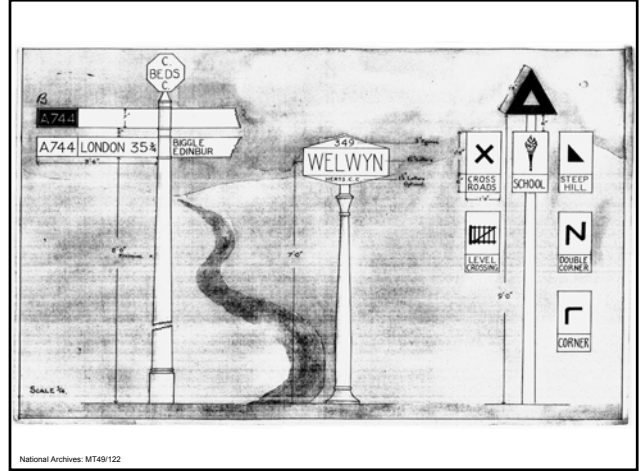
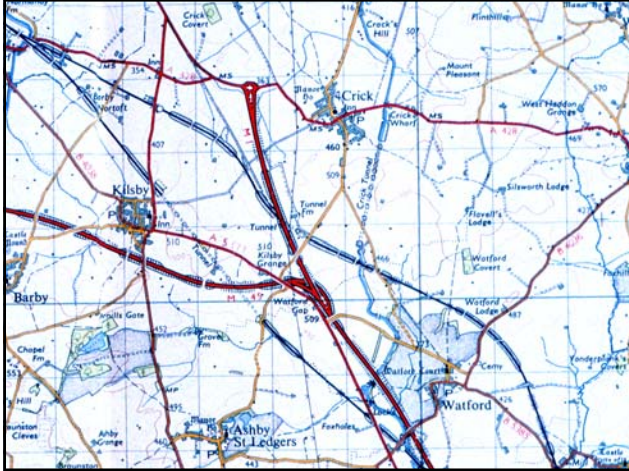
Traffic signs conference & exhibition
Celebrating 50 years of our modern signing system

**50 years of
 great British motorway signs**

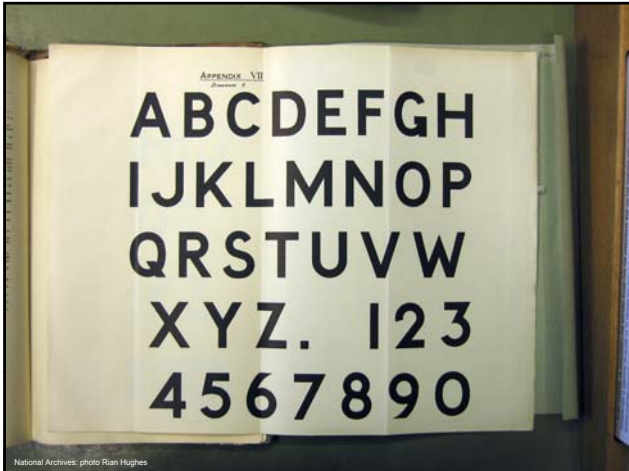
Phil Baines
 Professor of Typography, Central Saint Martins



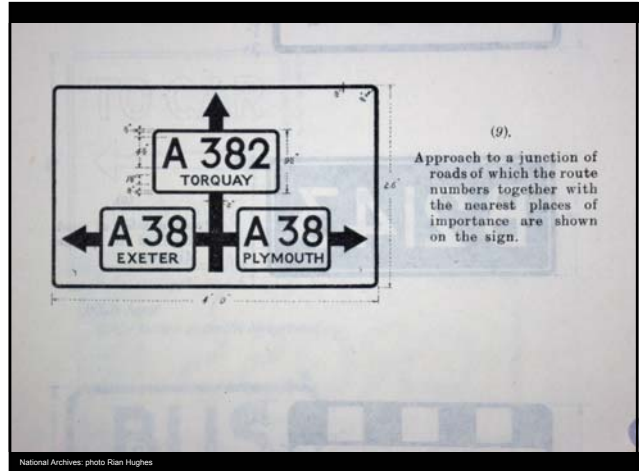




National Archives: MT49122



National Archives: photo Rian Hughes



National Archives: photo Rian Hughes







Figure 1. First and second pages of a book of all capital letters and numbers. See page 10, Appendix 10.

Figure 2. First and second pages of a book of all capital letters and numbers. See page 10, Appendix 10.

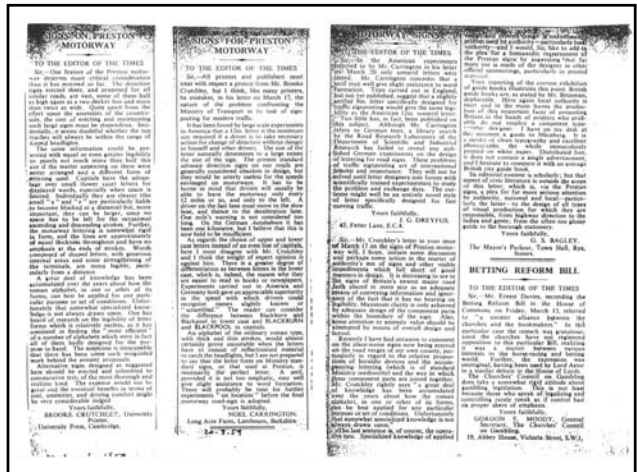


Figure 3. First and second pages of a book of all capital letters and numbers. See page 10, Appendix 10.

Figure 4. First and second pages of a book of all capital letters and numbers. See page 10, Appendix 10.

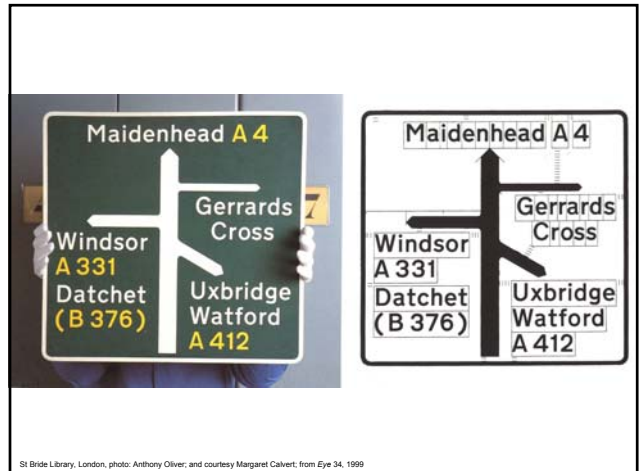
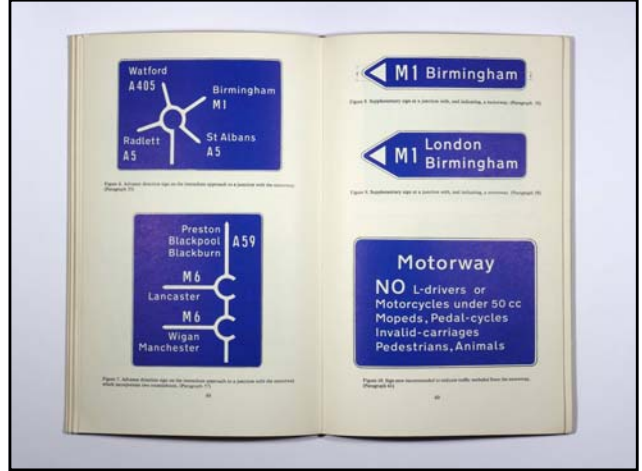
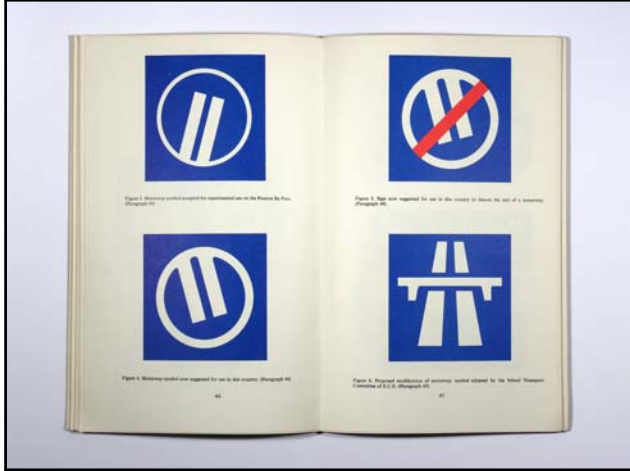


From Ron Eason & Sarah Rooke, 'Rookledge's International handbook of type design', Saffron 1991, p.97



Figure 3. Diagram illustrating the use of the letter 'A' and 'B' in a road sign. See page 10, Appendix 10.

Figure 4. Diagram illustrating the use of the letter 'A' and 'B' in a road sign. See page 10, Appendix 10.





St Bride Library, London Photo: Anthony Oliver for Eye 34, 1999



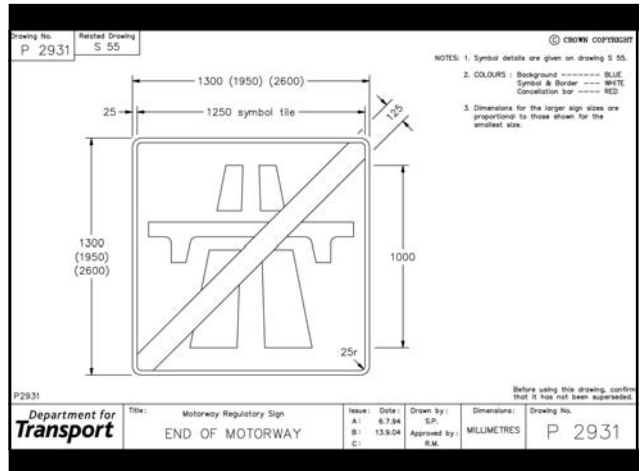
Fig. 2 Transport Related font specimen (detail) for use on signs with white background (Photograph of text for sign Appendix 102)

Fig. 3 Transport Related symbols and other characters for use on signs with white background (Photograph of text for sign Appendix 102)



Fig. 4 Transport Related font specimen (detail) for use on signs with white background (Photograph of text for sign Appendix 102)

Fig. 5 Transport Related font specimen (detail) for use on signs with white background (Photograph of text for sign Appendix 102)







a b c d e q r s t u
f g h i j k v w x y z
l m n o p

